

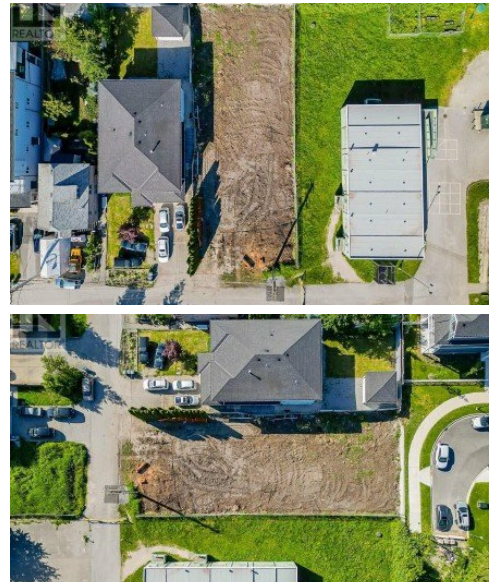
**231 Lawrence Street**  
New Westminster, BC V3M 5K9



HOMELIFE  
BENCHMARK  
REALTY CORP.

Powered by [homes.langleyadvancetimes.com](https://homes.langleyadvancetimes.com)

**MLS# R2954454**



**\$1,469,000**

BETTER THAN A DUPLEX!! Attn: Builders / Developers, 8,334 sqft lot located in the heart of Queensbrough. The property is at the end of a cul de sac adjacent to the Queensborough Middle School and just steps away from Queensborough Community Centre and Park. 2 road frontages Lawrence and Ota St. Property is cleared, zoned and approved for 2 lot subdivision, planning and engineering completed and approved by City of New Westminster. Call or email Bryce today for more information (id:5706)



**Homelife Benchmark Realty (Langley) Corp.**

Phone: (604) 530-4141

Homelife Benchmark Langley

For full listing details, please scan:

