

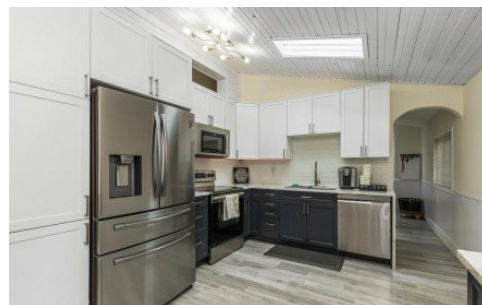
2082 Oakridge Crescent
Abbotsford, BC V2T 6A9



HOMELIFE
BENCHMARK
REALTY CORP.

Powered by homes.langleyadvancetimes.com

MLS# R2989255



\$879,000

3 Bedrooms | 2 Bathrooms | 2,098 Sqft

Delightful 4-bedroom, 2-bathroom home, 6700 sq. ft. lot with laneway access, Neighbourhood buzzing with exciting redevelopment. This property offers a blend of move-in-ready comfort and investment potential, appealing to first-time home buyers and savvy investors alike. 3 Generous Bedroom Upstairs - Perfect for families, with ample natural light and space for everyone. Newly remodeled kitchen & bathroom - The main bathroom and kitchen have tastefully upgraded, featuring elegant Quartz countertops and sleek stainless-steel appliances, ideal for modern living. Expansive Family Room - Located just off the kitchen, this large family room is perfect for entertaining or relaxing with loved ones. Large Deck w/hot tub underneath for privacy. (id:5706)



Homelife Benchmark Realty (Langley) Corp.

Phone: (604) 530-4141

Homelife Benchmark Langley

For full listing details, please scan:

