

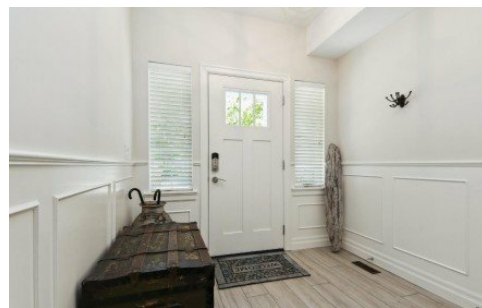
B 46981 Russell Road|promontory
Chilliwack, BC V2R 4V7



HOMELIFE
BENCHMARK
REALTY CORP.

Powered by homes.langleyadvancetimes.com

MLS# R3014975



\$929,000

3 Bedrooms | 4 Bathrooms | 2,539 Sqft

This very spacious 2,539sqft. 3 bed 4 bath former show home with extra wide stairs, shows very well. No Strata Fees, Management or Rules. A big Townhouse style that feels like a Home. Tastefully designed, well planned kitchen with high-end Bosch appliances and Pantry. Wide plank Laminate, designer Ceramic tile, and Quartz countertop. Large covered deck off kitchen perfect for entertaining, with gas hookup. Large windows for natural light and view. Huge primary bedroom with vaulted ceiling, walkin closet and ensuite bath. Massive 26x16 foot recreation room. Beautifully landscaped yard with Plums, Raspberries and Strawberries, backing onto forest and creek. Extra wide driveway. (id:5706)



Homelife Benchmark Realty (Langley) Corp.

Phone: (604) 530-4141

Homelife Benchmark Langley

For full listing details, please scan:

