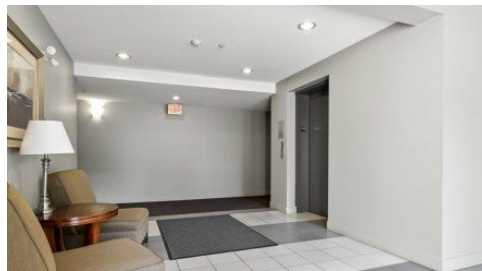


**305 - 19340 65 Avenue**  
Cloverdale, V4N 0A3



Powered by [homes.langleyadvancetimes.com](https://homes.langleyadvancetimes.com)

**MLS# R3040091**



**\$514,900**

**2 Bedrooms | 2 Bathrooms | 850 Sqft**

Gorgeous 850sf condo in the Esprit at Southlands complex! Great layout w/ 2 large bedrooms - separated by the living space. Kitchen w/s/s appliances, granite countertops, large breakfast bar overlooking your dng/lvg w/electric fp and access to your covered East facing 10'7X6'2 deck. Kitchen has ample cabinets and countertops - leads to your laundry room w/extra storage. The primary has a huge wi closet and a 3 piece ensuite w/large shower. The other bdrm is located close to your 4 piece main bthrm. Comes with 2 sxs under building parking spots & a big storage locker. Complex has great amenities!



**Karen Ralph**

Phone: (604) 761-0064

One Percent Realty Ltd.

Office: (604) 806-0900

For full listing details, please scan:

