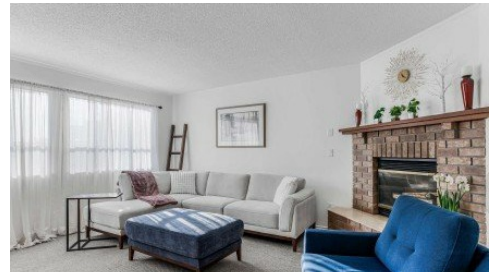


15 - 11125 232nd Street
Maple Ridge, V2X 3R3

RE/MAX
LIFESTYLES REALTY

Powered by homes.langleyadvancetimes.com

MLS# R3080471



\$915,000

4 Bedrooms | 2 Bathrooms | 1,638 Sqft

Looking for a Single Family home for the price of a townhouse? Look no further! Checkout this recently reno'd bare-land strata home on a cul-de-sac located East Central Maple Ridge. Exterior has been refreshed including fresh trims, paint and artificial turf in the front always giving your home a fresh appeal. Features 2025 Stainless Steel Appliances, A/C, 3 Bed's upstairs with a newly updated modern tiled bathroom w/ heated tiles. 4th bed/flex room is located in the garage with its own closet. Can be turned back into a garage very easily if necessary. Large private backyard and patio with a Gazebo so you can enjoy it all year long. Home has copper piping throughout and a 4 ft tall crawl space for easy access. Walking distance to Kanaka Creek Elementary & Thomas Haney Secondary.



RE/MAX LifeStyles Langley

Phone: (604) 466-2838

RE/MAX LifeStyles Realty

Office: (604) 466-2838

For full listing details, please scan:

